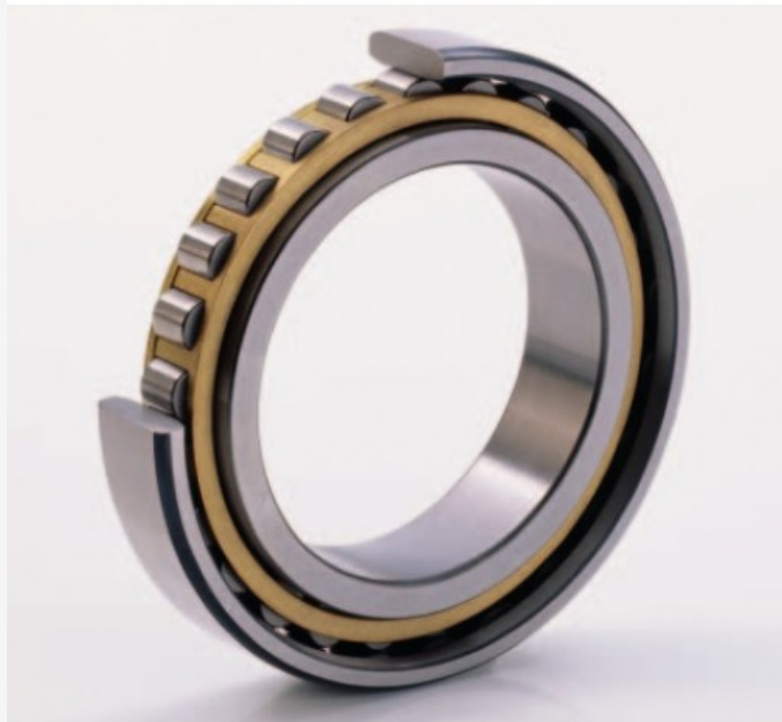


[Bearings](#) [Roller bearings](#) [Single row cylindrical-roller bearings](#) [N1930-K-M1-SP / FAG](#)



N1930-K-M1-SP / FAG
11,258.05 ron
Ex Tax: 9,460.55 ron
• **Model:** N1930-K-M1-SP
• **Dimensions:** 150.00mm x 210.00mm x 28.00mm

FAG

[FAG](#)

Single row cylindrical-roller bearing **N1930-K-M1-SP**
Brand: **FAG** Размер: **150X210X28**

d (inner diameter) 150 mm

D (outer diameter) 210 mm

B (width) 28 mm

PREFIX

Prefix/Suffix	Description
---------------	-------------

M1	Solid brass cage, two-piece, roller-guided
----	--

SP	Dimensional accuracy to ISO tolerance class 5 and running accuracy better than ISO tolerance class 4.
----	---

K	Tapered bore, taper 1:12
---	--------------------------